

Junction Cabinets

CLASS B & CLASS C - SCEC

SRA Solutions manufacture a range of secure Government (SCEC) endorsed Class B and Class C Junction Cabinets.

SRA Solutions high-security Junction Cabinets are ideal for improved structured cabling design and installation, providing physical security to networks within Government data centres and offices that are controlled by secure network infrastructure protocols.

These cabinets provide secure network, junction or termination space, typically connecting between backbone cabling and horizontal cabling. Suited for data or voice communications using category 5e (CAT5e), category 6 (CAT6), fibre optic cabling and modular connectors.

FEATURES:

Locking - Class B and Class C Security Containers

All our Class B and Class C Junction Cabinets are fitted with the appropriate SCEC endorsed security level locking solutions.

Class B cabinets are fitted with the very latest KABA X10 digital locks, which are designed to be resistant to all forms of external manipulation and environmental attack. The Kaba X-10 is the trusted choice for securing the Australian Government's most sensitive material. Another SCEC approved lock is the S&G 2740 Class B. The S&G 2740B can be fitted as an alternative to the X-10. Featuring advanced electromechanical design, the 2740B can be used on all SCEC approved cabinetry requiring a spyproof dialing sequence.

Class C cabinets are fitted with the BiLock, the most recognised high security master key system in Australia.

Design and Manufacture Requirements

SRA Solutions Junction Cabinets are designed, manufactured and endorsed to strict SCEC requirements. The cabinets are of welded construction and have anti tamper features (dog bolts, recessed door and extended returns).

The movement and operation of the locks and boltwork are smooth and require little effort to operate.

Unique Serial Number Identification

Each security container is identified with a nine digit serial number, which is permanently marked on an identification label in the uppermost right hand front corner of the security container.

Warranty

All SRA Solutions SCEC endorsed Junction Cabinets come with a 12 month parts only warranty. Class B cabinets fitted with KABA X10 locks have a 2 year lock warranty.

For further details please refer to SRA Solutions standard terms and conditions - www.srasolutions.com.au/legal/



Available Colours:

Mannex Suede

Mannex Black

BENEFITS:

Capacity

All SRA Solutions SCEC endorsed Junction Cabinets feature two 50mm diameter cable entry penetrations. These are conveniently located at the top right and bottom left hand sides of the cabinet. Both penetrations have corresponding internal cable entry baffles that are removable but must be refitted to comply with the endorsement of the product.

These Class B and Class C Junction Cabinets consist of two sides, a back, a top and bottom hamper with a strengthened door. Manufactured from 1.9 mm mild steel they are welded to form a secure one piece unit.

Customisation

Do you have an application that requires something beyond our standard offerings? We can work with you to design a custom solution that meets your special requirements. Our inhouse capability means that we are able to respond quickly to new design requests or modifications.

SRA Solutions has SCEC approval to customise the size of the Junction Cabinets. The cabinet size can be customised up to 800mm wide, 400mm deep and 2000mm high.

Workmanship

SRA Solutions workmanship is of the highest standard and the outside of the finished container presents a neat attractive appearance, free from finishing marks, rough edges and other blemishes.

SCEC Endorsed

A wide range of government departments - including Defence, Australian Federal Police, Department of Home Affairs - rely on SRA Solutions for secure infrastructure.

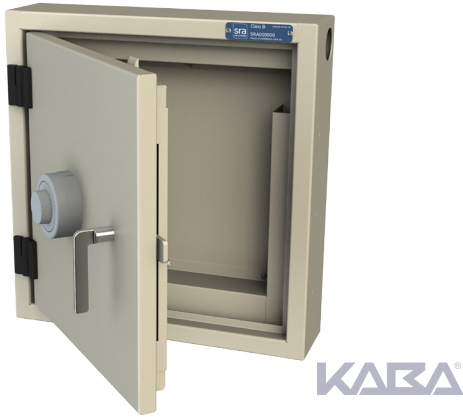
More Information

e: enquiry@srasolutions.com.au | p: +61 2 6298 1855

w: www.srasolutions.com.au | www.sraonline.com.au



SEEPL-028



Product Information

Used for termination and distribution/routing of high-security communications systems in a classified environment they are an excellent substitute for traditional 19" racks when equipment separation is needed.

Typically designed for wall/surface mounting, other applications include housing telecom equipment to prevent unauthorized access in secure equipment rooms. Perfect for fast deployment and easy onsite connection.

Class B - Junction Box

Available Colours:



Lock: KABA X10 Digital Lock
 Material: 1.9 Zinc Anneal steel
 Finish: Textured electrostatic powder coat - corrosion resistant
 Colours: Mannex Suede, Mannex Black (custom colours available)
 Size: Internal - 366 high, 346mm wide (usable space)
 Weight: 28kg

Product Specifications:

Dimensions	Height	Width	Depth
External	520mm	500mm	125mm
- w/Lock & Handle	520mm	500mm	180mm
- w/Door Open	520mm	513mm	565mm
Packaging	575mm	555mm	240mm

Technical Specifications:

Part ID	Model	Colour	Mount	
129622	Class B	Mannex Suede	Rear*	BUY NOW
130110	Class B	Mannex Black	Rear*	BUY NOW

* Rear mounting positions are pre-defined
 * Mounting hardware not included

Note - S&G 2740B lock available on request.

SEEPL-027



Product Information

Used for termination and distribution/routing of high-security communications systems in a classified environment they are an excellent substitute for traditional 19" racks when equipment separation is needed.

Typically designed for wall/surface mounting, other applications include housing telecom equipment to prevent unauthorized access in secure equipment rooms. Perfect for fast deployment and easy onsite connection.

Class C - Junction Box

Available Colours:



Lock: BiLock Master Key System
 Material: 1.9 Zinc Anneal steel
 Finish: Textured electrostatic powder coat - corrosion resistant
 Colours: Mannex Suede, Mannex Black (custom colours available)
 Size: Internal - 366 high, 346mm wide (usable space)
 Weight: 23kg

Product Specifications:

Dimensions	Height	Width	Depth
External	520mm	500mm	125mm
- w/Lock & Handle	520mm	500mm	180mm
- w/Door Open	520mm	513mm	565mm
Packaging	575mm	555mm	240mm

Technical Specifications:

Part ID	Model	Colour	Mount	
129617	Class C	Mannex Suede	Rear*	BUY NOW
130111	Class C	Mannex Black	Rear*	BUY NOW

* Rear mounting positions are pre-defined
 * Mounting hardware not included

More Information

e: enquiry@srasolutions.com.au | p: +61 2 6298 1855
 w: www.srasolutions.com.au | www.sraonline.com.au

