

Class B Rack

Series 9



SRA Solutions Series 9 Class B Racks are the ultimate choice for organisations that prioritise security, reliability, and scalability in their IT Infrastructure. SCEC Endorsed security make it the go-to solution for Government agencies, Defence organisations, and businesses dealing with sensitive data. The Series 9 Class B Rack has a robust construction and ensures protection against physical threats and unauthorised access.

Engineered for optimized airflow and a range of configurable options, the Series 9 Class B Rack allows businesses to adapt and expand thier IT infrastructure without compromising security.

Series 9 Class B Racks are designed and manufactured from years of collective experience in the secure data centre and ICT sectors. Trusted by some of the largest security organisations, our Series 9 Class B racks offer unbeatable security, quality and reliability.

Features and Benefits



Configured to Order

There is no one size fits all approach. Each rack is configured uniquely to meet the functional intent and performance requirements.



SCEC Endorsed

Ensuring compliance with stringent security standards, the Series 9 range has been tested and endorsed to meet the Security Construction and Equipment Committee (SCEC) requirements.



Recessed Doors and Side Panels

SRA Solutions Recessed Doors and Side Panels are designed with smart space utilization in mind, reducing your server rack's footprint within the data center or office space without compromising functionality.



Airflow Management

Shield your equipment from temperature fluctuations. Our air management solutions maintain optimal cooling, promoting hardware longevity and operational reliability.



Heavy Duty Load Rating

Built to handle the toughest demands with a robust static weight capacity of 1250kg.



Superior Cable Management

Eliminating tangling and ensuring streamlined connections. The Series 6 Commercial Rack offers tidy and organized integrated cable management.



Pre-Configured

All racks are assembled in the factory and pre-configured with selected accessories. Our pre-configured options come ready to go, ensuring rapid installation and minimal downtime.



Recessed PDU & Tool-less Mounting

Ensures seamless power rail compatibility, allowing you to effortlessly manage power distribution without hassle.

Class B Rack

Series 9

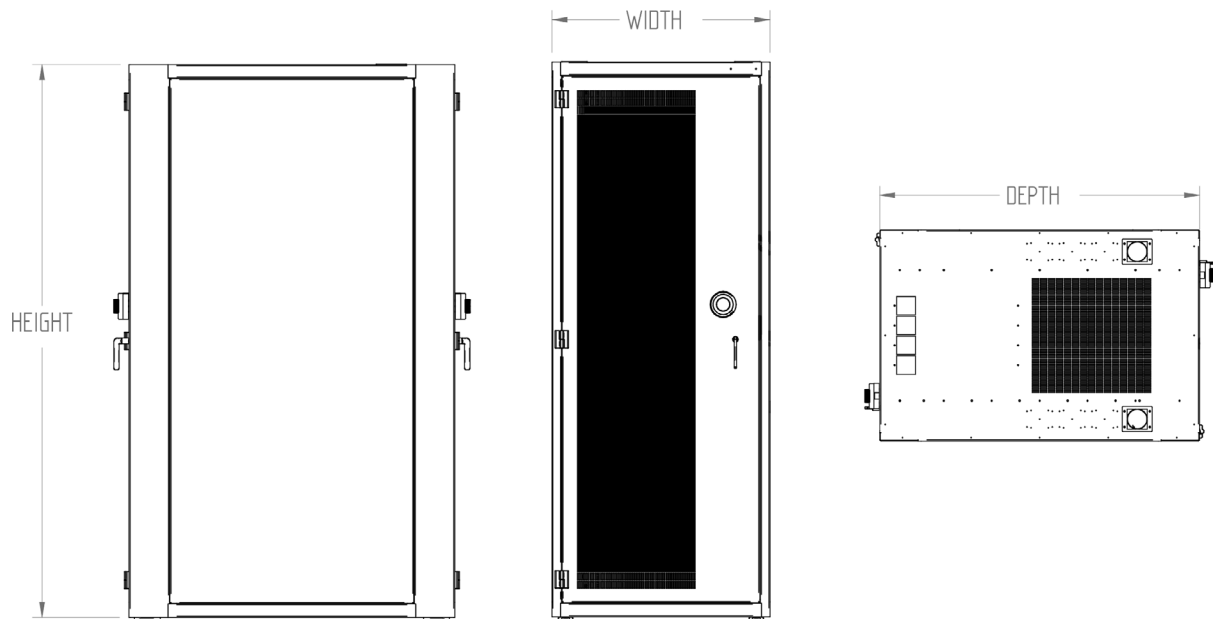
Dimensional Data and Available Sizes

Height			Width	Depth				
RU	Levelling Feet	Castor Wheels		650 mm	800 mm	900 mm	1050 mm	1200 mm
12RU	717 mm	755 mm	600 mm	•	•	•	•	•
18RU	984 mm	1022 mm		•	•	•	•	•
21RU	1117 mm	1155 mm		•	•	•	•	•
24RU	1250 mm	1289 mm		•	•	•	•	•
27RU	1384 mm	1422 mm			•	•	•	•
30RU	1517 mm	1555 mm				•	•	•
36RU	1784 mm	1822 mm				•	•	•
39RU	1917 mm	1955 mm				•	•	•
42RU	2050 mm	2089 mm				•	•	•
45RU	2184 mm	2222 mm				•	•	•
48RU	2317 mm	2355 mm				•	•	•
12RU	717 mm	755 mm		750 mm		•	•	•
18RU	984 mm	1022 mm			•	•	•	•
21RU	1117 mm	1155 mm			•	•	•	•
24RU	1250 mm	1289 mm			•	•	•	•
27RU	1384 mm	1422 mm			•	•	•	•
30RU	1517 mm	1555 mm				•	•	•
36RU	1784 mm	1822 mm				•	•	•
39RU	1917 mm	1955 mm				•	•	•
42RU	2050 mm	2089 mm				•	•	•
45RU	2184 mm	2222 mm				•	•	•
48RU	2317 mm	2355 mm				•	•	•
12RU	717 mm	755 mm	800 mm			•	•	•
18RU	984 mm	1022 mm			•	•	•	•
21RU	1117 mm	1155 mm			•	•	•	•
24RU	1250 mm	1289 mm			•	•	•	•
27RU	1384 mm	1422 mm			•	•	•	•
30RU	1517 mm	1555 mm				•	•	•
36RU	1784 mm	1822 mm				•	•	•
39RU	1917 mm	1955 mm				•	•	•
42RU	2050 mm	2089 mm				•	•	•
45RU	2184 mm	2222 mm				•	•	•
48RU	2317 mm	2355 mm				•	•	•

Class B Rack

Series 9

Dimension Drawing



Technical Information

Conformance to standard:	EIA-310-E 1996 Electronic Industries Alliance Dimensions for cabinets, racks and associated equipment
Conformance to standard:	DIN 41494-7 Dimensions for cabinet and suite of racks
Static load Capacity:	1,200 kg
Endorsement:	Security Construction and Equipment Committee (SCEC)

Construction

Frame	1.9mm zinc anneal steel, Powder coat finish Fully welded construction Flexible cable entry options
Mounting rails and brackets	1.9mm zinc anneal steel, Powder coat finish Adjustable front to rear in 15mm increments Laser etched rack unit (RU) identification 3 cage nut positions per rack unit
Doors	1.9mm zinc anneal steel, Powder coat finish Spot welded construction Lift off hinges, swing to 140 degrees Recessed (flush) mounted within the frame
Locks	KABA X-10 High Security Lock
Side panels	1.9mm zinc anneal steel, Powder coat finish Internally secured for additional security

Class B Rack

Series 9

Cable Entry Options

The SRA Solutions Series 9 Class B Rack offers flexible cable entry options. As specified by the Security Equipment and Construction Committee (SECC), incoming communications and power cabling must enter the rack via a baffle system.



Cable Entry Baffle Pipe



Cable Entry Baffle Box

Due to the design of each baffle style, rack widths and depths must be considered during the design phase of a project. The below tables outline each baffles compatibility with SRA Solutions standard Series 9 Rack width's and depth's.

Cable Entry Baffle Pipe

Number of Cable Entry Baffles	Width	Depth				
		650 mm	800 mm	900 mm	1050 mm	1200 mm
Two (2)	600 mm					
Four (4)						
Six (6)						
Eight (8)						
Two (2)	750 mm	
Four (4)				.	.	.
Six (6)					.	.
Eight (8)						.
Two (2)	800 mm	
Four (4)				.	.	.
Six (6)					.	.
Eight (8)						.

Cable Entry Baffle Box

Two (2)	600 mm
Four (4)					.	.
Two (2)	750 mm
Four (4)					.	.
Two (2)	800 mm
Four (4)					.	.

Class B Rack

Series 9

Standard Configuration Options

The SRA Solutions Series 9 Class B Rack offers a range of standard configuration options tailored to diverse business needs. With choices in rack height, width and depth, door styles and accessories, it ensures adaptable solutions for various industries. The standard configurations guarantee quality and reliability, making the Series 9 an ideal choice for businesses seeking a versatile and secure rack solution.

Colour

Mannex Suede



Mannex Black

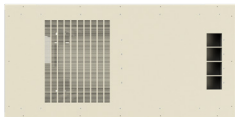


Mannex White



Frame Top and Frame Bottom

Vented



Solid



Door

Vented



Solid



Window



Levelling

Levelling Foot Kit



Levelling Foot Kit with Castors



Side Panel

Solid Panel



Mounting Rail

Standard 19" Mounting Rail



Heavy Duty 19" Mounting Rail



Class B Rack

Series 6

Tool-less PDU Mounting Tray

Flat PDU Mounting Tray



Recessed PDU Mounting Tray

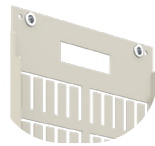


Cable Tray

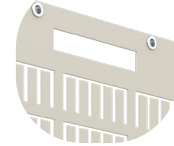
150 mm Cable Tray



200 mm Cable Tray

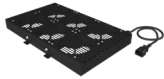


300 mm Cable Tray



Fan Tray

Roof-Mount Fan Tray

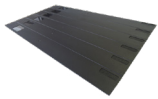


Door-Mount Fan Tray

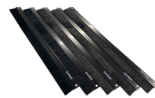


Blanking Panels

EZIBlack 1RU Blanking Panel



EZIBrush 1RU Brushed Panel

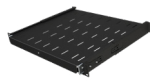


Shelves

1RU 19" Fixed Shelf



1RU 19" Sliding Shelf



Horizontal Cable Management

1RU Horizontal Cable Manager



2RU Horizontal Cable Manager



Vertical Cable Management

Thermal Manager



Thermal Vertical Cable Manager



Vertical Cable Manager

