

SRA SECAP PDU

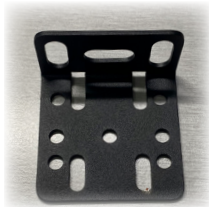
Installation Guide

OVERVIEW

SRA SECAP vertical mount PDUs are supplied with two mounting ears, the mounting ears can be converted into vertical mounts with buttons to suit SRA manufactured PDU mounting trays. The following instructions show the method of assembly and installation of the brackets onto a SRA SECAP PDU.

HARDWARE REQUIREMENT

Each SRA SECAP PDU requires the below hardware for vertical mounting:



2 x L-shape mounting brackets



2 x threaded stud
2 x mounting buttons
2 x button nut



4 x M4x8 countersunk screw
SRA Part ID: 133281

Please note: The threaded studs, mounting buttons and button nuts are supplied separately to the L-shape PDU brackets. The M4x8 countersunk screws are supplied separately to the L-brackets and button hardware.

TOOL REQUIREMENT

The below tools are required to install the PDU bracket:



Phillips head screwdriver

BRACKET ASSEMBLY

To assemble one vertical mounting bracket, please grab:

- 1 x L-shape bracket
- 1 x threaded stud
- 1 x mounting button
- 1 x button nut

insert the threaded stud through the L-shape bracket (*figure 1*), mount the mounting button onto the threaded stud, leaving the spacer side against the flat metal (*figure 2*) and secure the button with the button nut (*figure 3*).

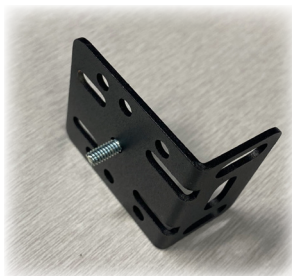


figure 1

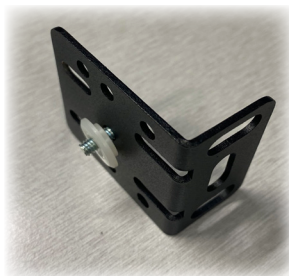


figure 2

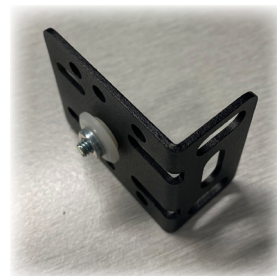


figure 3

SRA SECAP PDU

Installation Guide

Once you have completed the two brackets for your PDU, you will be ready to move onto the bracket installation onto the PDU.

BRACKET MOUNTING ASSEMBLY

With the mounting button positioned at the rear of the PDU, position the first bracket 50mm from the top of the PDU, lining the mounting holes with the screw channel (*figure 4*). To attach the bracket to the PDU, use a phillips head screwdriver and two M4x8 countersunk screws (*figure 5*).



figure 4



figure 5

Once your first bracket is installed, measure from the edge of the first bracket (*figure 6*) and position the second bracket, with the edge closest to the first bracket 492mm down the PDU (*figure 7*).



figure 6

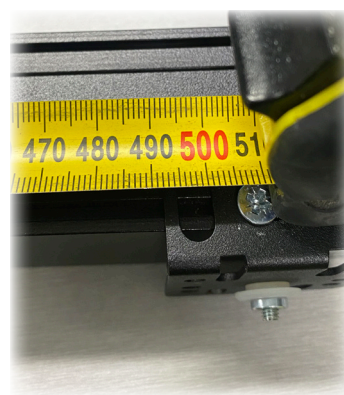
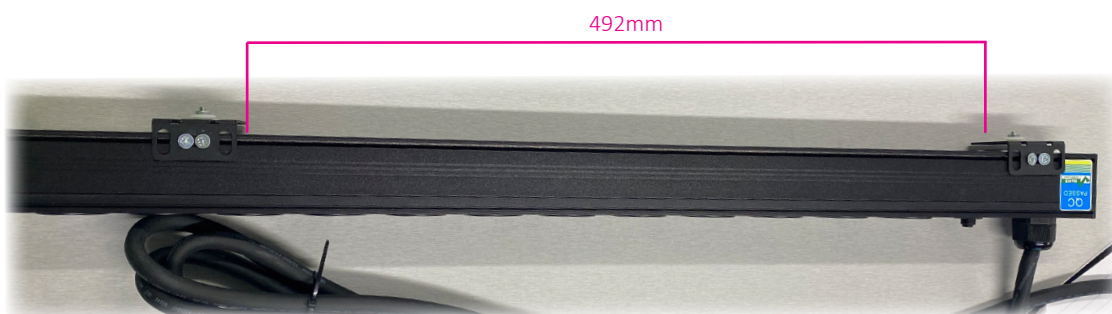


figure 7



Once you have installed both brackets, the PDU is now ready for vertical installation in the rack.