

Secure Key Cabinets

CLASS B & CLASS C - SCEC

SRA Solutions manufacture a range of secure Government (SCEC) endorsed Class B and Class C Key Cabinets which provide extra security and peace of mind.

These Key Cabinets are typically used in a secure office environment and are ideal for improved key management. Primarily each Key Cabinet is designed such that it is secured to provide positive protection against tampering and covert entry.

These Class B and Class C Key Security Cabinets consist of two sides, a back, a top and bottom hamper with a strengthened door. Manufactured from 1.9 mm mild steel they are welded to form a secure single piece unit.

FEATURES:

Locking - Class B and Class C Security Containers

All our Class B and Class C Secure Key Cabinets are fitted with the appropriate security level locking solutions.

Class B cabinets are fitted with the very latest KABA X10 digital locks, which are designed to be resistant to all forms of external manipulation and environmental attack. The Kaba X-10 is the trusted choice for securing the Australian Government's most sensitive material. Another SCEC approved lock is the S&G 2740 Class B. Featuring advanced electromechanical design, the 2740B can be used on all SCEC approved cabinetry requiring a spyproof dialing sequence.

Class C cabinets are fitted with the BiLock, the most recognised high security master key system in Australia. BiLock incorporates a new futuristic key head specifically designed to incorporate extensive colour coded master keying capabilities, ensuring optimal security. With over 8,000 colour combinations available, this new key head visibly defines the security levels within a master key system and allows instant identification of keys by system managers.

Maximum security and minimal aesthetics combine to form our Class B + Key Blister security containers. Typically used in a secure office environment these smaller key cabinets are specifically designed to be secured in a manner which provides positive protection against covert entry. Consisting of a fully welded 5mm steel body, with a hinged door secured by a SCEC Approved Class B lock.

Security and Compliance

SRA Solutions comply with strict SCEC door specifications, that the cabinet structure extends a minimum of 20 mm above and below the door opening. The door itself must also be recessed into the cabinet and is further strengthened with a stiffener welded to the internal face. The door is not to be removable from the container body and not to be reliant on the hinges for security.

Further tamper proofing is achieved with a removable cover plate formed from 1.0 mm mild steel sheet, extending the full height of the door and covering the internal boltwork.

Unique Serial Number Identification

Each security container is identified with a nine digit serial number, which is permanently marked on an identification label in the uppermost right hand front corner of the security container.

Warranty

All SRA Solutions SCEC Endorsed Key Cabinets and accessories come with a 12 month parts only warranty. Class B cabinets fitted with KABA X10 locks have a 2 year lock warranty - Refer to SRA Solutions standard terms and conditions.



Available Colours:

Mannex Suede

Mannex Black

BENEFITS:

Capacity

Available as a 300 key cabinet or as a 100 key cabinet with the additional option of a 200 key insert hinged expansion leaf. Provision is made for the storage of up to 300 x 75 mm long keys fitted with keyrings and tags. Key storage hooks are fixed to the inner face of the back panel, and also to the removable hinged leaf.

Customisation

Do you have an application that requires something beyond our standard offerings? We can work with you to design a custom solution that meets your special requirements. Our inhouse capability means that we are able to respond quickly to new design requests or modifications.

In accordance with SCEC directions, SRA Solutions are able to customise these dimensions, substitute colour and provide an alternate S&G Class B lock.

Design and Operation

SRA Solutions workmanship is of the highest standard and the outside of the finished container presents a neat attractive appearance, free from finishing marks, rough edges and other blemishes.

It is a SCEC requirement that the movement and operation of all locks and boltwork be smooth and require little effort to operate in an office working area and SRA Solutions have achieved these goals.

SCEC Approved

A wide range of government departments - including Defence, Australian Federal Police, Department of Home Affairs - rely on SRA Solutions for secure infrastructure.

- Class B and Class C cabinets must be installed in accordance with SCEC working note 1/84 and 2/84

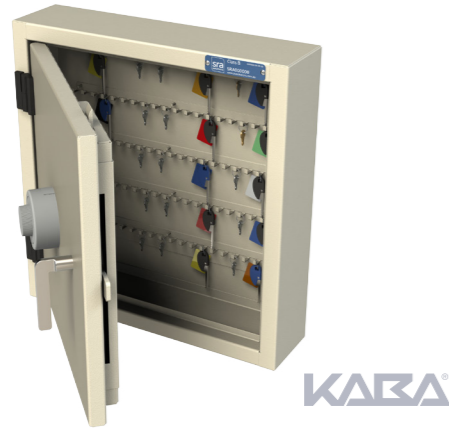
More Information

e: enquiry@srasolutions.com.au | p: +61 2 6298 1855

w: www.srasolutions.com.au | www.sraonline.com.au



SEEPL-024



Class B - Key Cabinet

Available Colours:

- Mannex Suede
- Mannex Black

Lock: KABA X10 Digital Lock
 Material: 1.9mm Zinc Anneal steel
 Finish: Textured electrostatic powder coat - corrosion resistant
 Colours: Mannex Suede, Mannex Black (custom colours available)
 Size: External - 520mm high, 500mm wide, 125mm deep
 Weight: 35kg

Product Specifications:

Dimensions	Height	Width	Depth
External	520mm	500mm	125mm
- w/Lock & Handle	520mm	500mm	180mm
- w/Door Open	520mm	513mm	565mm
Packaging	575mm	555mm	240mm

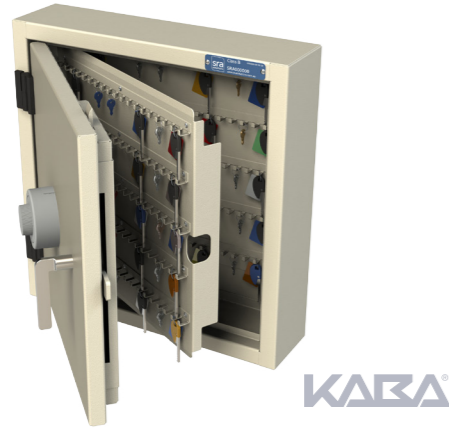
Technical Specifications:

Part ID	Model	Colour	Mount	
128645	100 Key	Mannex Suede	Rear*	BUY NOW
128646	300 Key	Mannex Suede	Rear*	BUY NOW
130046	100 Key	Mannex Black	Rear*	BUY NOW
130047	300 Key	Mannex Black	Rear*	BUY NOW

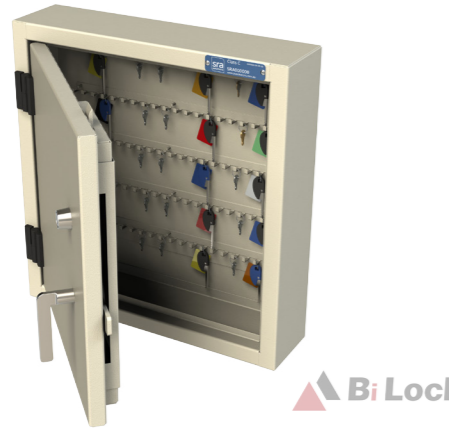
* Rear mounting positions are pre-defined
 * Mounting hardware not included

Note - S&G 2740B lock available on request.

SEEPL-022



SEEPL-023



Class C - Key Cabinet

Available Colours:

- Mannex Suede
- Mannex Black

Lock: BiLock Master Key System
 Material: 1.9mm Zinc Anneal steel
 Finish: Textured electrostatic powder coat - corrosion resistant
 Colours: Mannex Suede, Mannex Black (custom colours available)
 Size: External - 520mm high, 500mm wide, 125mm deep (see notes)
 Weight: 28kg

Product Specifications:

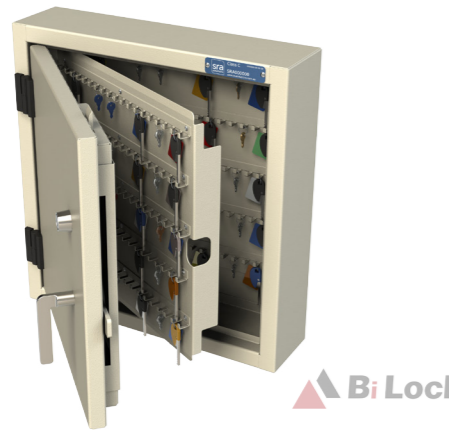
Dimensions	Height	Width	Depth
External	520mm	500mm	125mm
- w/Lock & Handle	520mm	500mm	180mm
- w/Door Open	520mm	513mm	565mm
Packaging	575mm	555mm	240mm

Technical Specifications:

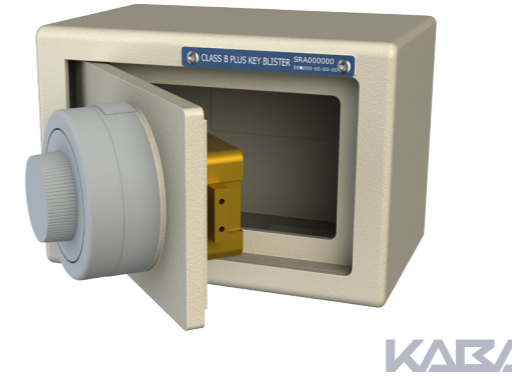
Part ID	Model	Colour	Mount	
128643	100 Key	Mannex Suede	Rear*	BUY NOW
128644	300 Key	Mannex Suede	Rear*	BUY NOW
130048	100 Key	Mannex Black	Rear*	BUY NOW
130049	300 Key	Mannex Black	Rear*	BUY NOW

* Rear mounting positions are pre-defined
 * Mounting hardware not included

SEEPL-021



SEEPL-032



Class B - Key Cabinet

Available Colours:

- Mannex Suede
- Mannex Black

Lock: KABA X10 Digital Lock
 Material: 5mm hot rolled steel, 10mm manganese plate
 Finish: Textured electrostatic powder coat - corrosion resistant
 Colours: Mannex Suede, Mannex Black (custom colours available)
 Size: External - 160mm high, 230mm wide, 150mm deep
 Weight: 14kg

Product Specifications:

Dimensions	Height	Width	Depth
External	160mm	230mm	150mm
- w/Lock & Handle	160mm	230mm	205mm
- w/Door Open	160mm	261mm	302mm
Packaging	330mm	265mm	200mm

Technical Specifications:

Part ID	Model	Colour	Mount	
129629	B+ Key Blister	Mannex Suede	Rear*	BUY NOW
129705	B+ Key Blister	Mannex Suede	Side*	BUY NOW
130050	B+ Key Blister	Mannex Black	Rear*	BUY NOW
130051	B+ Key Blister	Mannex Black	Side*	BUY NOW

* Side/Rear mounting positions are pre-defined
 * Mounting hardware not included

Note - S&G 2740B lock available on request.

Product Information

These Class B + Key Blister security containers are typically used in a secure office environment.

Consisting of a fully welded 5mm steel body, with a hinged door secured by a SCEC Approved Class B KABA X-10 combination lock.

Notes:

- These smaller key cabinets are specifically designed to be secured in a manner which provides positive protection against covert entry.
- The ideal mounting method is to be recessed within a wall or column.
- Cabinets must be installed in accordance with SCEC working note 2/84

Class B and Class C Leaf

Available Colours:

- Mannex Suede
- Mannex Black

Leaf: Double sided (up to 200 keys)
 Material: 1.5mm Zinc Anneal steel
 Finish: Textured electrostatic powder coat - corrosion resistant
 Colours: Mannex Suede, Mannex Black (custom colours available)
 Size: External - 413mm high, 520mm wide, 84mm deep
 Weight: 5kg

Product Specifications:

Dimensions	Height	Width	Depth
External	413mm	520mm	84mm
Packaging	470mm	575mm	140mm

Technical Specifications:

Part ID	Model	Colour	Mount	
130061	Leaf	Mannex Suede	Internal	BUY NOW
130060	Leaf	Mannex Black	Internal	BUY NOW

More Information

e: enquiry@srasolutions.com.au | p: +61 2 6298 1855
 w: www.srasolutions.com.au | www.sraonline.com.au





racks

power

cooling

security

managing

monitoring