

# Commercial Rack

Series 6

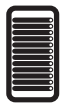


SRA Solutions Series 6 Commercial Racks provide a robust solution for supporting the needs of data centre, server, telecommunications and communications rooms. To assist in delivering improved compute and storage performance.

The Series 6 Commercial Rack system is compatible with SRA Solutions extensive range of vertical and horizontal cable managers, and other accessories

Series 6 racks are designed and manufactured from years of collective experience in the data centre and ICT sectors. Trusted by some of the largest data centre and enterprise companies, our Series 6 racks offer unbeatable quality, reliability and longevity.

## Features and Benefits



### Configured to Order

There is no one size fits all approach. Each rack is configured uniquely to meet the functional intent and performance requirements.



### Pre-Configured

All racks are assembled in the factory and pre-configured with selected accessories. Our pre-configured options come ready to go, ensuring rapid installation and minimal downtime.



### Recessed Doors and Side Panels

SRA Solutions Recessed Doors and Side Panels are designed with smart space utilization in mind, reducing your server rack's footprint within the data center or office space without compromising functionality.



### Airflow Management

Shield your equipment from temperature fluctuations. Our air management solutions maintain optimal cooling, promoting hardware longevity and operational reliability.



### Heavy Duty Load Rating

Built to handle the toughest demands with a standard static weight capacity of 1250kg.



### Superior Cable Management

Eliminate tangling and ensure streamlined connections. The Series 6 Commercial Rack offers tidy and organized integrated cable management.



### Increased Usable Space

Ensures you're equipped to scale your infrastructure with ease.



### Recessed & Tool-less PDU Mounting

Ensures seamless power rail compatibility, allowing you to effortlessly manage power distribution without hassle.

# Commercial Rack

Series 6

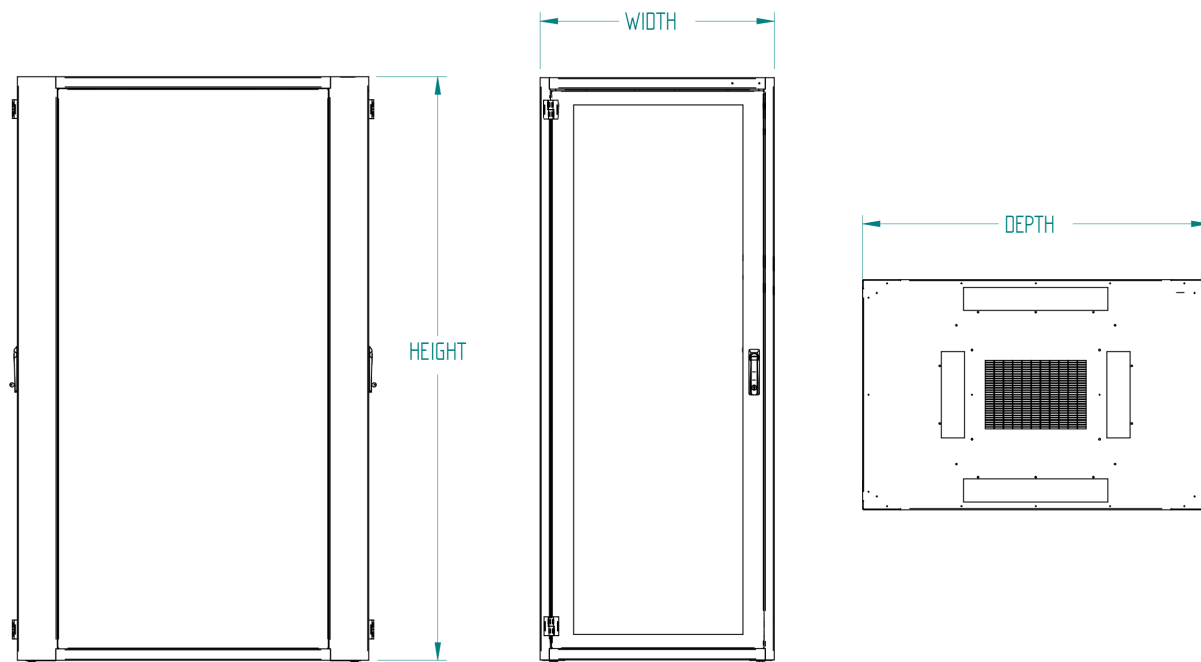
## Dimensional Data and Available Sizes

Height			Width		Depth				
				650 mm	800 mm	900 mm	1050 mm	1200 mm	
RU	Levelling Feet	Castor Wheels	600 mm						
12RU	672 mm	711 mm			•	•	•	•	•
18RU	939 mm	978 mm			•	•	•	•	•
21RU	1072 mm	1111 mm			•	•	•	•	•
24RU	1206 mm	1245 mm			•	•	•	•	•
27RU	1339 mm	1378 mm				•	•	•	•
30RU	1472 mm	1511 mm					•	•	•
36RU	1739 mm	1778 mm					•	•	•
39RU	1872 mm	1911 mm					•	•	•
42RU	2006 mm	2045 mm					•	•	•
45RU	2139 mm	2178 mm					•	•	•
48RU	2273 mm	2312 mm				•	•	•	
12RU	672 mm	711 mm	750 mm			•	•	•	
18RU	939 mm	978 mm				•	•	•	•
21RU	1072 mm	1111 mm				•	•	•	•
24RU	1206 mm	1245 mm				•	•	•	•
27RU	1339 mm	1378 mm				•	•	•	•
30RU	1472 mm	1511 mm					•	•	•
36RU	1739 mm	1778 mm					•	•	•
39RU	1872 mm	1911 mm					•	•	•
42RU	2006 mm	2045 mm					•	•	•
45RU	2139 mm	2178 mm					•	•	•
48RU	2273 mm	2312 mm					•	•	•
12RU	672 mm	711 mm	800 mm			•	•	•	
18RU	939 mm	978 mm				•	•	•	•
21RU	1072 mm	1111 mm				•	•	•	•
24RU	1206 mm	1245 mm				•	•	•	•
27RU	1339 mm	1378 mm				•	•	•	•
30RU	1472 mm	1511 mm					•	•	•
36RU	1739 mm	1778 mm					•	•	•
39RU	1872 mm	1911 mm					•	•	•
42RU	2006 mm	2045 mm					•	•	•
45RU	2139 mm	2178 mm					•	•	•
48RU	2273 mm	2312 mm					•	•	•

# Commercial Rack

Series 6

## Dimension Drawing



## Technical Information

Conformance to standard:	EIA-310-E 1996 Electronic Industries Alliance Dimensions for cabinets, racks and associated equipment
Conformance to standard:	DIN 41494-7 Dimensions for cabinet and suite of racks
Static load Capacity:	1,200 kg

## Construction

Frame	1.9mm zinc anneal steel, Powder coat finish Fully welded construction Flexible cable entry options
Mounting rails and brackets	1.9mm zinc anneal steel, Powder coat finish Adjustable front to rear in 15mm increments Laser etched rack unit (RU) identification 3 cage nut positions per rack unit
Doors	1.15mm zinc anneal steel, Powder coat finish Spot welded construction Lift off hinges, swing to 140 degrees Recessed (flush) mounted within the frame
Side panels	1.15mm zinc anneal steel, Powder coat finish Internally secured for additional security

# Commercial Rack

Series 6

## Standard Configuration Options

The SRA Solutions Series 6 Commercial Rack offers a range of standard configuration options tailored to diverse business needs. With choices in rack height, width and depth, door styles and accessories, it ensures adaptable solutions for various industries. The standard configurations guarantee quality and reliability, making the Series 6 an ideal choice for businesses seeking a versatile and robust commercial rack solution.

### Colour

Mannex Suede



Mannex Black

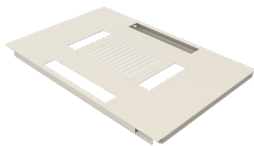


Mannex White



### Frame Top and Frame Bottom

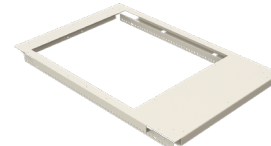
Vented



Solid



Open



### Door

Vented



Solid



Window



Double



### Levelling

Levelling Foot Kit



Levelling Foot Kit with Castors



### Side Panel

Solid Panel



Solid Panel with Clips



### Mounting Rail

Standard 19" Mounting Rail



Heavy Duty 19" Mounting Rail



# Commercial Rack

Series 6

## Tool-less PDU Mounting Tray

Flat PDU Mounting Tray



Recessed PDU Mounting Tray

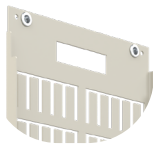


## Cable Tray

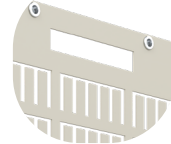
150 mm Cable Tray



200 mm Cable Tray

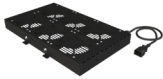


300 mm Cable Tray



## Fan Tray

Roof-Mount Fan Tray

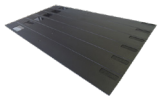


Door-Mount Fan Tray

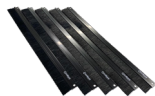


## Blanking Panels

EZIBlack 1RU Blanking Panel



EZIBrush 1RU Brushed Panel



## Shelves

1RU 19" Fixed Shelf



1RU 19" Sliding Shelf



## Horizontal Cable Management

1RU Horizontal Cable Manager



2RU Horizontal Cable Manager



## Vertical Cable Management

Thermal Manager



Thermal Vertical Cable Manager



Vertical Cable Manager

